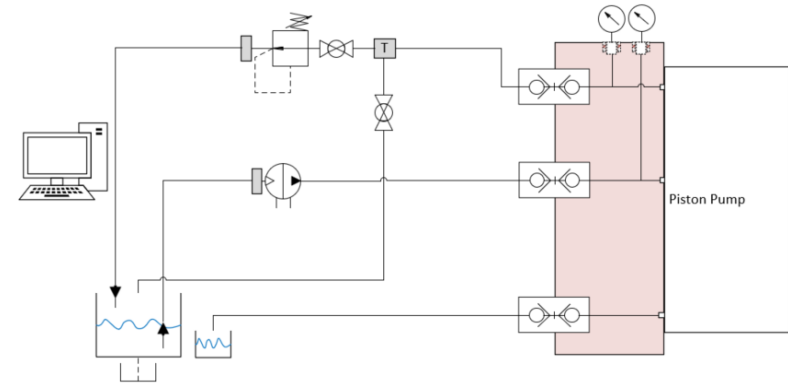


# Test planning, set-up and execution with a CO2 pump

The ZMS works on the research for the safe storage of CO<sub>2</sub> in subsea deposits. As part of the research we look into a novel barrier test unit which is supposed to operate with CO<sub>2</sub>.

## Objectives and Tasks:

- Definition of tests for the verification and qualification of a pump unit
- Setting up a test bench to carry out the tests with the process medium CO<sub>2</sub>
- Carrying out the tests and analysing the test results



**Ansprechpartner (Erstbetreuer):** Prof. Dr. rer. nat. Markus Glaser

**E-Mail:** markus.glaser@hs-aalen.de

**Tel.:** +49 (0) 7361 576-3308

**Industriepartner:**

Advanced Mechatronics GmbH

