

Workshop

Experiential orientation in Sustainability Education

Environmental Management System for Schools
Event Management for Sustainable Development

Prof. Dr. Ulrich Holzbaaur, Aalen University
Ulrich.Holzbaaur@htw-aalen.de
 Dipl.-Ing. Rudolf Kaufmann, City of Aalen

Possible Workshop Subjects

- Agenda 21
 - Implementation of Agenda 21 in a Community
 - Local Agenda 21 in Aalen
- Cooperation
 - City of Aalen and Aalen University
 - Cooperation
 - Student's Projects
- Experiential Orientation
 - Event Management
 - Events for Education for Sustainable Development
- Environmental Management System for Schools
 - The Environmental Management System
 - Peer Review

Sustainable Development

- World Commission on Environment and Development, 1987
 "Sustainable development is development that meets the needs of the present without compromising the ability of future generations to meet their own needs."
- Agenda 21
 - Rio 1992 declaration
 - Sustainable development
 - Economic
 - Ecological
 - Social
- World Summit on Sustainable Development
 Johannesburg, South Africa in 2002

Sustainable development

- Brundtland Definition:
 - other people (intragenerational justice) and
 - future generations (intergenerational justice)
 - can fulfil their needs.
- Sustainable development is an ongoing process
 - evolution of the earth (including all natural or cultural subsystems)
 - influenced (in the positive and negative sense) by mankind.
- Several concepts support sustainability but are not ends in themselves:
 - stability, conservation,
 - diversity,
 - efficiency,
 - responsibility,
 - caution.

Agenda 21

- The Rio declaration Agenda 21 is aiming to improve the social, ecological and economical status of the World and to fight the ongoing deterioration in these areas
- Humanity stands at a defining moment in history.
We are confronted with a perpetuation of disparities between and within nations, a worsening of poverty, hunger, ill health and illiteracy, and the continuing deterioration of the ecosystems on which we depend for our well-being.
 However, integration of environment and development concerns and greater attention to them will lead to the fulfilment of basic needs, improved living standards for all, better protected and managed ecosystems and a safer, more prosperous future.
 No nation can achieve this on its own; but together we can - in a global partnership for sustainable development.

Education for Sustainable Development

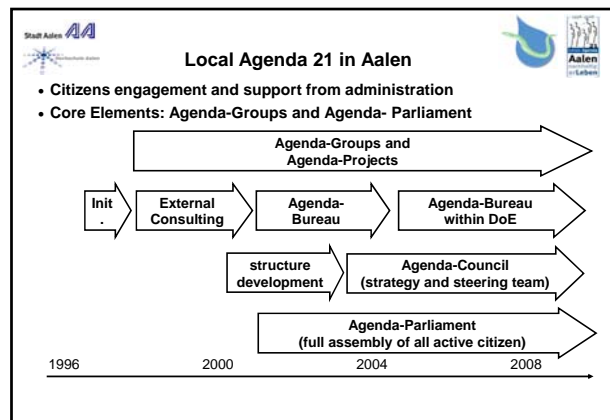
- Sustainable development is an ongoing process
 - evolution of the earth (including all natural or cultural subsystems)
 - influenced (in the positive and negative sense) by mankind.
- Several concepts support sustainability but are not ends in themselves:
 - stability, conservation,
 - variety, diversity,
 - efficiency, effectiveness,
 - responsibility, caution

Education is the key to Sustainable Development

Education for Sustainable Development
United Nations Decade (2005-2014)

Local Agenda 21

- Chapter 28:
LOCAL AUTHORITIES' INITIATIVES IN SUPPORT OF AGENDA 21
- 28.2. (a)
By 1996, most local authorities in each country should have undertaken a consultative process with their populations and achieved a consensus on "a local Agenda 21" for the community.
- The Local Agenda 21
 - A paper
 - An aim
 - A project
 - A continuous process

Agenda-Parliament

- Twice a year
- Participants:
 - Members of all agenda groups
 - Representatives from the city parliament (all parties)
 - Administration Lord Mayor Mayors
 - Interested citizen
 - Representatives of the press



Agenda-Groups more than 60 Projects



International activities

- Partner cities:
 - Antakya
 - Christchurch
 - Saint Lo
 - Tatabanya
- Email contact to partners via Tourist Information
- One World shop, Govinda
- Sports clubs, Churches, Parties, Unions, Round Table: partnership with Christchurch



International partnerships Antakya

- Visits between Aalen and Antakya on a regular basis
 - Outgoing 200 +
 - Incoming
- Support for the association for handicapped people
- Cooperation with the human right organization IHD in Antakya
- Contacts with environmental, religious, political and cultural groups
 - Dance of the culture
- Exchange of learners from schools
- Contacts between HTW-Aalen and Mustafa Kemal University
- Guides: "Reiseführer Antakya" "Antiochien am Orontes"



Support for sustainable economic development

- Sustainable development needs also an economic development.
- On a local basis this means to
 - support local industry, business, enterprises and start-ups
 - provide area management
 - foster contacts among each other and with external competences
 - provide space for start-ups
 - develop the structure of stores in the city centre to ensure the survival and diversity of shopping opportunities and the attractive city centre
 - support local market and regional products
 - provide support, from the university or Steinbeis transfer centres
 - educate engineers and entrepreneurs

Aalen City aktiv







Further Activities towards Sustainable Development

- Aalen City Administration
 - Energy
 - Consulting and controlling of energy consumption
 - European Energy Award 2007
 - Environment
 - Landscape planning and biotope networks
 - Concept for climate protection
 - Social Sustainability
 - Gender and Demographic issues
 - Security feeling, ISA
- Girls/women and science/technology
 - Project AAUAS with Aalen City
 - Girls' day

Bildung und Umwelt



Soziales und Gesundheit



sind uns wichtig

im Zusammenspiel

Citizens' Engagement in Aalen

- Honorary Engagement is wide spread in Aalen:
 - More than 300 clubs and associations registered on www.aalen.de
 - More than 90 sports clubs with in total more than 30 000 members
 - More than 100 culture-oriented clubs
 - A lot of supporting associations in education ...
- Churches, Political Parties, Unions, Service Clubs
- Citizens' Engagement within the Local Agenda 21
- A lot of informal engagement specially neighbourly help
- Excellence in all activities – in the profession or in honorary work – is an important way of engaging for the benefit of the community

ECHT GUT!

official perceived


informal citizens' engagement

Aalen University

- Sustainability and Environmental protection in all faculties and courses
 - Recycling, Renewable energies
 - Sustainable Development, Regional Marketing
 - Quality and Sustainable Development: Module in Industrial Management
- Project of the UN decade for ESD
- Senate's delegate for Sustainable Development
- Kid's university Ecology and Energy
- Studium Generale: Ethics and Sustainability
- Participation in
 - Information days on energy
 - Local Agenda 21 groups
- Students' projects

Nachhaltigkeit lernen

Offizielles Projekt der Weltdekade 2008 / 2009



Sustainability Events

- Experiential learning is an important means of Education for Sustainable Development. The most typical example is the series of projects "Aalen nachhaltig(er)leben" on the occasion of 10 years of Local Agenda 21 in Aalen.
- Le communication base aux expérience est un outil importante pour le éducation pour un développement durable. Le exemple plus typique est le séries des évents sur la titre «Aalen nachhaltig(er)leben»
- Erlebnisorientierung ist ein wichtiges Werkzeug der Bildung für Nachhaltige Entwicklung

1998–2008

21 lokale Agenda

Aalen nachhaltig(er)leben

Nachhaltigkeit lernen


Offizielles Projekt der Weltdekade 2008 / 2009

Experiential orientation in ESD

- Concepts of event management:
 - Address people emotionally
 - Plan events carefully to ensure success
 - Activate and involve participants
- Experiential learning
 - Learning in an activating setting
 - Involvement of learners
 - Prepared and planned situation
 - Rational and emotional aspects
- Examples:
 - „Aalener Jugenddreieck“
 - „Aalen nachhaltig(er)leben“
 - Forest paedagogy

Event-менеджмент

Y. Kuznetsov, D. Dornier, S. Kopp, P. Muey, M. Gering



Stadt Aalen **AA** Chancengleichheit

Aalen nachhaltig er Leben

- Aalen nachhaltiger leben
= live more sustainable in Aalen
- Aalen nachhaltig erleben
= experience sustainable Aalen
- 2008-09
- Programmes for each quarter
- Holistic impression
Experiential learning
Events for Education for Sustainable Development

1998-2008

lokale Agenda 21
Aalen nachhaltig erLeben

1998-2008

lokale Agenda 21
Aalen nachhaltig erLeben

Nachhaltigkeit lernen

Weltdekade der Vereinten Nationen 2005-2014
Bildung für nachhaltige Entwicklung
UNESCO
Offizielles Projekt der Weltdekade 2008 / 2009




Stadt Aalen **AA** Chancengleichheit

Experiential orientation four the young

- Aalener Jugendreieck:

A triangle of

- Technology and science
 - Labs of the university
 - Presentation on ecology and energy
- Sustainability
 - Presentation on ecology and energy
 - Forest paedagogy
- Sports
 - Hockey

Stadt Aalen **AA** Chancengleichheit

Experiential orientation four the young

- Technology and science
- Sustainability
- Sports










Stadt Aalen **AA** Chancengleichheit

Agenda Group for renewable resources and energy saving

- Informationstage Energie – Energy information days
- Every year in February
- Organised by the Local Agenda Group
- Exhibition + presentations




Stadt Aalen **AA** Chancengleichheit

Aalen for all – Barrier free





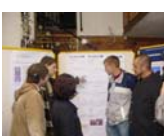






Stadt Aalen **AA** Chancengleichheit

Day of the region and regional marketing

- Aalen 2006, 2007, 2008 ...

AAUAS - WIW

Project Examples (1)

- Course on Engineering Management
- Modules
 - Project Management
 - Quality and Sustainable Development
- Example: Information on sustainability and regenerative energies at Aalbäumle tower

AAUAS - WIW

Project Examples (2)

- Support of projects on
 - Green Eel EMS
 - Experiential orientation in ESD
 - Regional marketing
 - Aalen for All / barrier free
 - Energy information
- Analysis of public transportation for students (semester ticket)
- Analysis of special places and special groups with respect to security feeling and crime prevention
- Analysis of alcohol consumption and sales as a contribution to prevention
- Analysis of special events
- Quality and Excellence

Steinbeis TC Applied Management

Sustainability and culture

- Steinbeis Transfer Centre at Aalen
- Three women as a role model
- City of Giengen/Brenz
- Sustainability and culture
- Project of the UNESCO Decade ESD

event

- event and event management
 - safe and secure and successful implementation of an event ,
 - added value of an emotional experience and uniqueness.

conceptual strategy :
event
+ added value

successful implementation:
project + process

event development

event organisation

ressources, framework, conditions, infrastructure, logistics

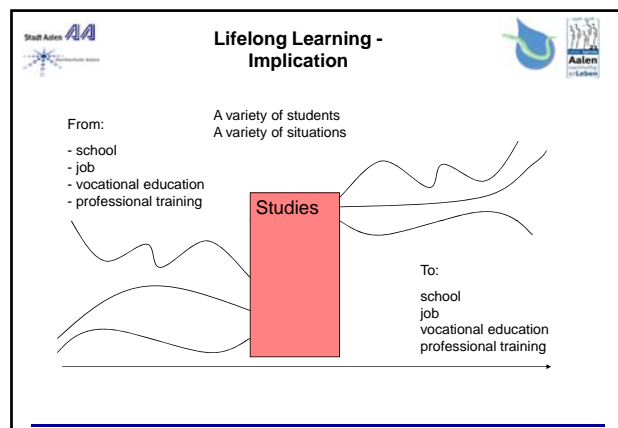
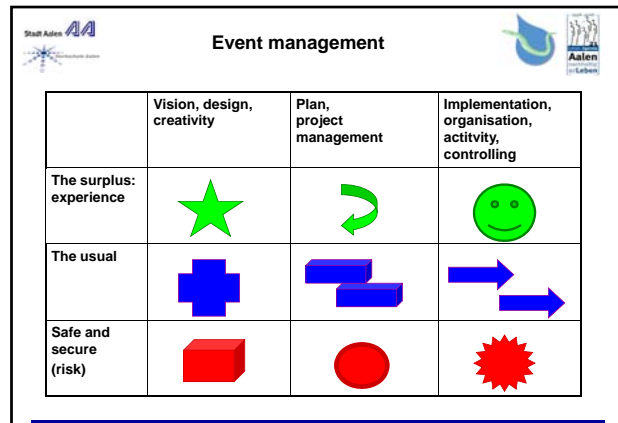
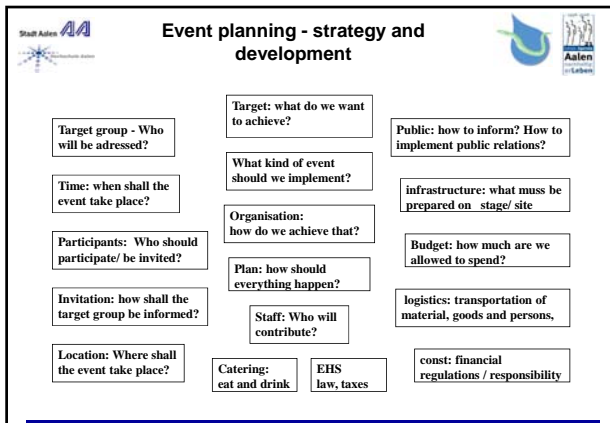
project management, management, phases, conceptual strategy

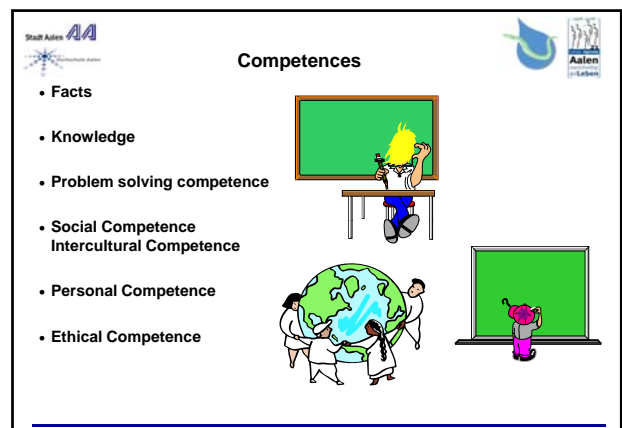
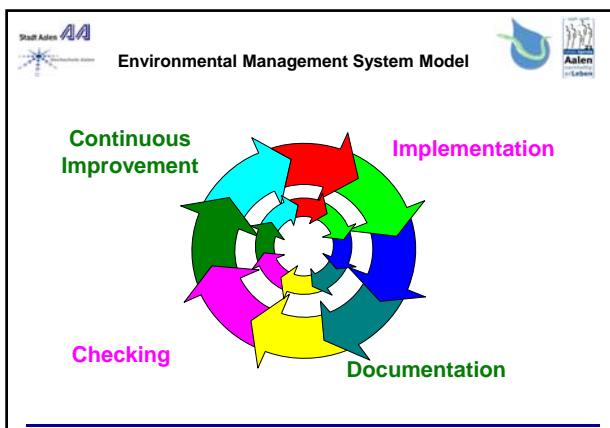
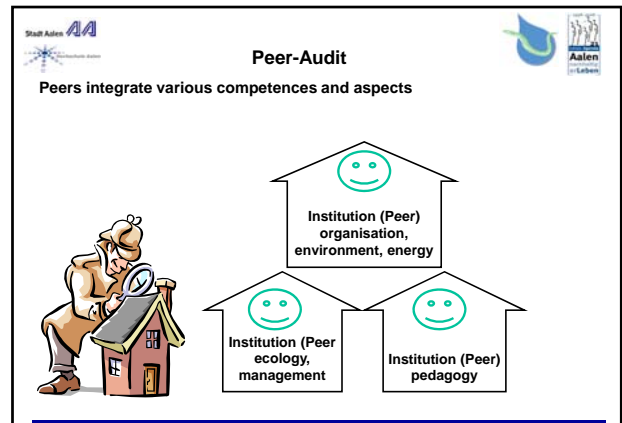
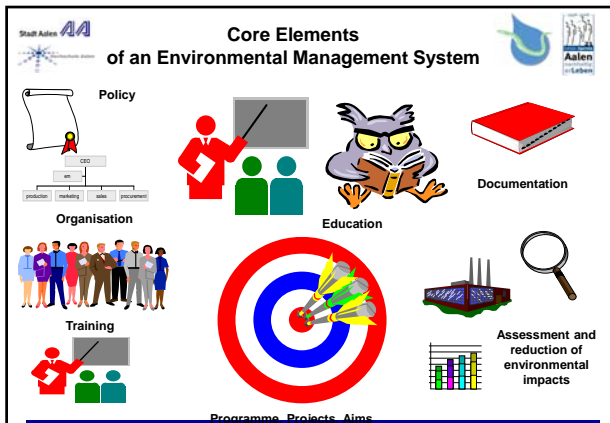
What makes an event?

- Subjective individual and common perception
- moments emotional experience, memorability
- positivity, good/well feeling/emotion
- group/team emotional experience
- symbols, feeling/emotion
- activity, activation, action
- uniqueness
- I/me vs. we/us
- connection of impressions and symbols
- multiplicity of experience, media and perception

How to make an Event?

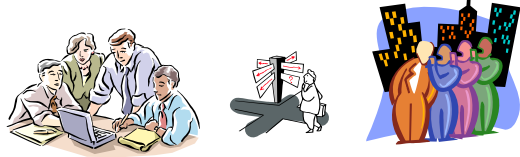
- perception
- planning/ mise en scene, design, schedule /script
- event, experience, feeling, fun, joy
- relation, emotional nearness, integration
- activity, activation, action, stress
- emotion, euphoria
- multiplicity of impressions
- brand, notions
- added value, plus
- multiplicity





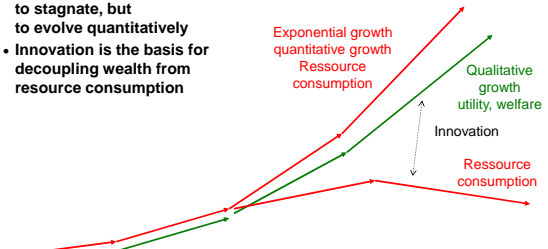
Science and politics – two separate worlds?

- Science is based on facts
 - objective data
 - reproducible conclusions
- Political decision making is the art of the feasible
 - governing body
 - majority decision



Sustainability and innovation

- Sustainability does not mean to stagnate, but to evolve quantitatively
- Innovation is the basis for decoupling wealth from resource consumption



Exponential growth
quantitative growth
Ressource
consumption

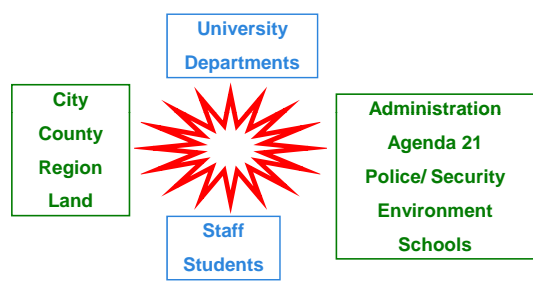
Qualitative
growth
utility, welfare

Innovation

Ressource
consumption

Science and Technology should be (and be perceived as) the solution and not the cause of the problems.

Community and University



University
Departments

City
County
Region
Land

Administration
Agenda 21
Police/ Security
Environment
Schools

Staff
Students

Experiential orientation four the young

- Aalener Jugenddreieck
A triangle of
 - Technology and science
 - Labs of the university
 - Presentation on ecology and energy
 - Sustainability
 - Presentation on ecology and energy
 - Forest paedagogy
 - Sports
 - Hockey





Experiential orientation four the young

- Technology and science
- Sustainability
- Sports





The only thing more expensive than education is ignorance

Benjamin Franklin



The Prepared Project Method (PPM)

- treats projects like planning games makes it possible to carry out projects that have a real-life training effect for the students, excellent chances of success, and a positive impact on community development and on the public perception of the university. Moreover, students from several semesters participate in each individual project, which gives additional challenges and chances for students and project partners.



Projects

- give students not only insight and knowledge; they also show to academia and to the public that students can support quality and sustainability in a variety of aspects in industry and community. To achieve these goals, projects must be prepared carefully and cooperation with partners must be sought and cultivated.

Projects in the Curriculum



- Bologna process
- B Eng
 - Project
 - Quality and Sustainability
 - Computer Science Project
- M Eng
 - Engineering Mangement

Projects



- Empirical Background: own projects

| | | | |
|--------------------------------|------|-----|--------|
| • Theses | 25 Y | 400 | 200 PY |
| • Industrial projects | 20 Y | 20 | 20 PY |
| • Classical students' projects | 15 Y | 200 | 30 MY |
| • Prepared project method | 5 Y | 200 | 50 MY |

Planning Games

- Planning games
 - Well prepared
 - Skript
 - Plan
 - Risk minimisation
 - Decision oriented
- Prepared Projects Method

Planning Games and Projects

| | | |
|--------------------|--|--|
| Aspect | Planning game | PPM |
| Model | The learning situation and decisions cannot take place in reality. | Planned projects are selected prototypes of projects. By means of intensive preparation, the risk is reduced |
| Decision | The decision aspect is crucial for management, planning games and projects | |
| | The decisions and their consequences stand in the foreground. | Decisions are necessary to achieve the goals |
| Dynamics | The learning situation is embedded into a dynamic and changing scenario | |
| | Dynamics are implemented by a software, script or trainer. | Dynamics are given by the project phases and the evolution of the project |
| Didactics Pedagogy | The planning game and the planned project have a purpose in training and education. They are adapted to a specific training situation and must be adapted to the situation and guided by an experienced supervisor or trainer. | |
| Effect | Training oriented (no impact on reality) | Outcome and education oriented |

Model

- The learning situation and decisions cannot take place in reality.
- Planned projects are selected prototypes of projects.
- By means of intensive preparation, the risk is reduced

Decision

- The decision aspect is crucial for management, planning games and projects
- The decisions and their consequences stand in the foreground.
- Decisions are necessary to achieve the goals

Dynamics

- The learning situation is embedded into a dynamic and changing scenario
- Dynamics are implemented by a software, script or trainer. Dynamics are given by the project phases and the evolution of the project

Didactics

- Pedagogy The planning game and the planned project have a purpose in training and education. They are adapted to a specific training situation and must be adapted to the situation and guided by an experienced supervisor or trainer.

Effect

- Training oriented (no impact on reality) Outcome and education oriented

The Triad – The Magic Triangle of Project Management

Internal targets
Viability
Achieve the aims within the course.

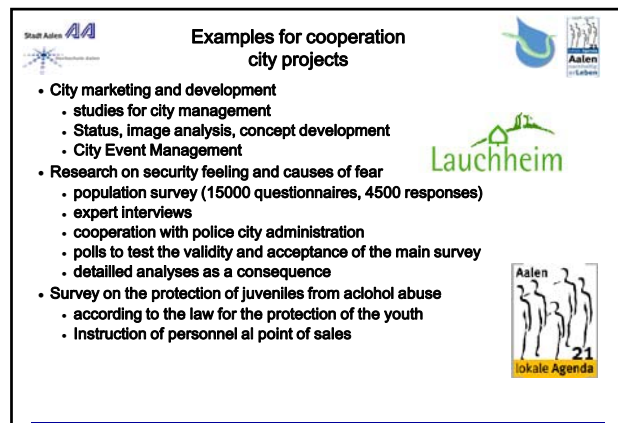
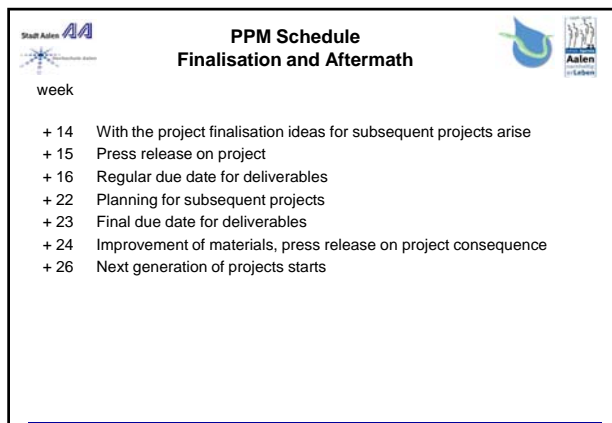
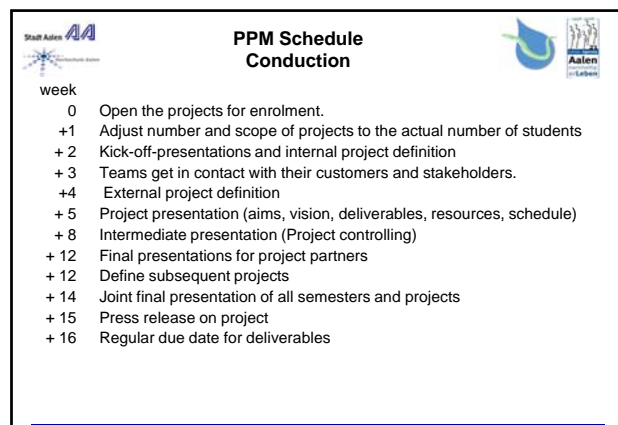
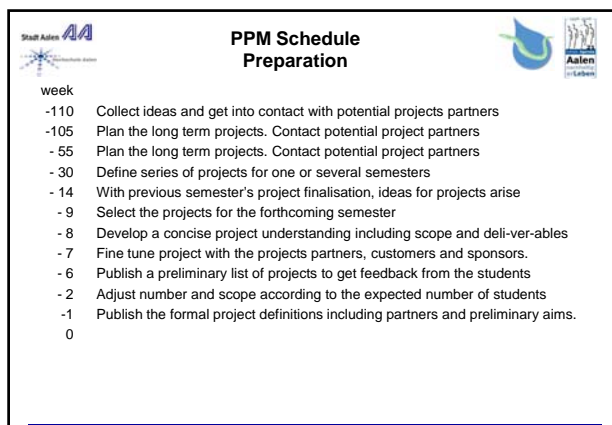
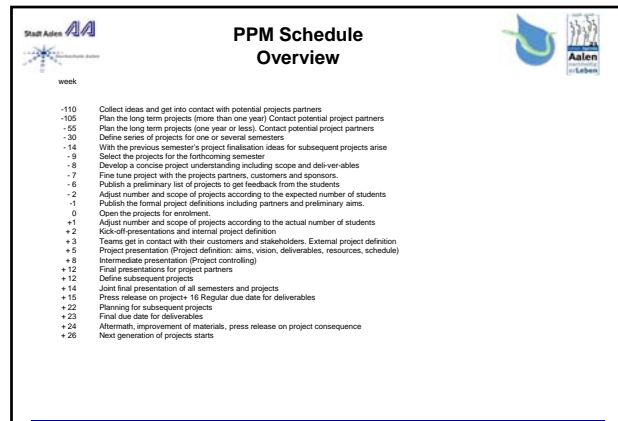
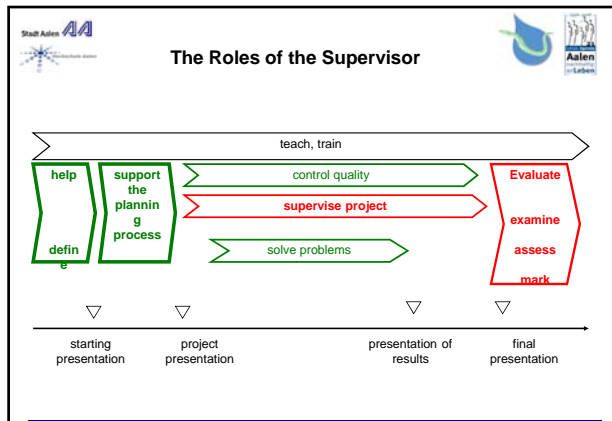
Quality, Results, Vision, Deliverables
Q

External targets
• Learning effect for the team
• Contribution to course aim
• Project result for customers

Optimal match

R Resources
Staff, Money, Credit Points

T Time
Milestone, Timeline, Course schedule



Quality and environmental management system

- The green eel – EMS for schools
 - Concepts and activities instead of formalism:
 - Peer auditing system
 - Development of criteria and handbooks
 - Support for implementation
 - Participation in Audits

Community and Tourism

- Barrier-free tourism
 - status analysis of Aalen City with respect to handicapped people's mobility.
 - Implementing a barrier free city as a contribution to tourism development
- Regional Marketing and development
 - "green tours" to promote local tourism and direct marketing for farmers
 - Regional brand and Virtual Regional Mall
- Regional Tourisms

Examples for cooperation Local Agenda 21

- Support of the youth newspaper edited by juveniles for juveniles
 - providing infrastructure and training
- Agenda Group for renewable resources and energy saving
- Local Agenda 21
 - Initiation, Infrastructure
 - Support on structural decisions
- Industrial Environmental Management
 - Initiation of Auditing Convoi (for companies in a city)
- LA 21-Activities (schools, teachers)
 - Suburban development
 - Landscape protection
 - Networking for labour-seeking juveniles

Environment and SMME

- Public transportation: Research for giving advice and initiating projects in private-public-partner-ship for improving public transportation (especially for students).
- Funding, marketing, management, environmental protection for sports clubs
- SMME
 - Study on skills and know-how needed by local SMME
 - Support for management, accounting and technological aspects for local enterprises, especially for SMME
 - quality and environmental management for NPO and SMME

Project Benefits and Problems

- Students Skills
 - Practical Problems, know the future political environment
 - Influence the decisions and future development
- Community/ Government benefits
 - Problems are analyzed and researched methodically, solutions they are assessed independently, future activities are analyzed holistically.
 - Projects that require specialized skills or planning competence are addressed. With a student's project, local authorities also buy into the skill and knowledge of the supervisor.
- Professionalism
 - mutual perception
 - professionalism vs. honorary work
- Competences of government and councils

Work Breakdown Structure

- Work packages

Project Benefits



- Students Skills
 - Practical Problems
 - Know the future political environment
 - Influence the decisions and future development
- Community/ Government benefits
 - Problems are analyzed and researched methodically, solutions they are assessed independ-ent-ly, future activities are analyzed holistically.
 - Projects that require specialized skills or planning competence are addressed. With a stu-dent's project, local authorities also buy into the skill and knowledge of the supervisor.

Project Problems



- Professionalism
 - mutual perception
 - professionalism vs. honorary work
- Competences of government and councils
 - Project Management
 - Setting Targets
 - Early Phases
- Funding

Success Criteria



- Students Skills
- Professionalism and mutual trust
- Stakeholder analysis and communication
- Careful preparation